

the college school

RETURN TO SCHOOL 2020-2021



UPDATED JULY 2020



TABLE OF CONTENTS

INTRODUCTION.....2-4

LEARNING SCENARIOS.....5

ON-CAMPUS LEARNING.....6

HEALTH AND SAFETY.....7-9

STUDENT SCHEDULES AND ACTIVITIES.....10-11

HOW FAMILIES CAN HELP THIS SUMMER.....12

DISTANCE LEARNING.....13

OVERVIEW - DISTANCE LEARNING.....14-17

ADVENTURE AND OUTDOOR EDUCATION.....18

GLOSSARY OF TERMS.....19

INVESTMENTS IN SAFETY, PROGRAM, AND COMMUNITY.....20

SOCIAL EMOTIONAL WELLBEING.....21

WHAT WE WILL GAIN.....22

COMMITTEE ON REOPENING SCHOOL.....23

Note: The contents of this reopening plan may change as the global health situation evolves. The College School will make adjustments in accordance with the latest guidance from experts and will communicate frequently with the community.



INTRODUCTION

The Committee on Reopening School (CRS) has been actively researching and planning how best to reopen for the 2020-21 school year in a way that is true to our mission and aligned with expert guidance.

Our primary goal is to provide the best education possible in the safest way as we navigate the COVID-19 pandemic as a community. Our preference and plan is to return to in-person learning. However, we are prepared to pivot to an enhanced version of distance learning and to offer a blended learning experience, as the ever evolving situation requires. This reopening plan outlines our expectations for the fall. We will continue to revise and refine it in the weeks leading up to opening day in light of the most current guidance from local and state authorities.

Please know that although circumstances may change throughout the year, our experiential education and our community's social and emotional health will remain our focus, no matter the context.

We look forward to welcoming you back to The College School.

OUR MISSION

To explore the world through authentic experiences, empowering students to engage deeply and be ready for what is next.



INTRODUCTION

GENERAL SCHOOL CALENDAR

- > **Monday, August 10 - Friday, August 14** - Faculty/Staff professional development and preparation
- > **Wednesday, August 19*** - First day of school, half day
- > **Thursday, August 20** - Second day of school, full day (half day for Early Childhood)
- > **Friday, August 21** - Third day of school, full day (half day for Early Childhood)
- > Last day of school is on **Thursday, May 20, 2021**
- > Please review the On-Campus Learning (page 6) and Distance Learning (page 14) calendars for more details on what to expect the first week of school in each scenario.

*Students or families returning from states or countries with increasing rates of COVID-19 or where COVID-19 is common are advised to self-quarantine for 10 days. Please carefully consider any travel before the start of school.



GUIDING PRINCIPLES

The following principles will guide our leadership team as we make the best decisions possible for our community.

- > Our top priority is the collective health and safety of our students, faculty, staff, and families. We will strive to make decisions that can be sustained by all community members over the course of the school year. Clear and regular communication with our community is critical for maintaining trust and ensuring the smoothest experience for all involved.
- > Our mission and commitment to Adventure and Outdoor Education, the Reggio Emilia philosophy, and project-based learning will be essential to how we make decisions. We will maintain a strong educational experience for our students through the pandemic and will make sound financial choices to ensure the long-term sustainability of the institution for generations more.
- > As a small school, we will adapt as needed to meet the changing situation and to minimize disruption for students.
- > Remaining inclusive in our decision making will help us best address the needs of our diverse constituents.

INTRODUCTION

EXPERT GUIDANCE

In preparation to open campus for the 2020–2021 school year, TCS will implement the following guidelines and procedures. These have been developed in accordance with federal, state, and local guidelines for social gathering, CDC recommendations for schools pre-K through 8, and in consultation with a committee of health experts. Guidelines and procedures will be further updated and enhanced as more information is available.

This plan was developed and recommended by The College School Committee on Reopening School (CRS). The Committee comprises four subcommittees that address all areas of the program and operation and develop protocols and procedures for reopening. The committee structure can be found at the end of this document (page 26).

The College School Re-Opening Protocols:

- > TCS will consider the guidelines of the following departments and entities to help determine operations and best practices for the school:
 - > Incorporate guidelines from the [Centers for Disease Control](#) (CDC)
 - > Incorporate guidelines from the [World Health Organization](#) (WHO)
 - > Incorporate guidelines from the [Missouri](#) and [St. Louis](#) health departments
 - > Align to US and [St. Louis](#) Phased Opening Guidelines
 - > Incorporate guidelines from the federal [OSHA](#) standards related to COVID-19
 - > Align with The College School Core Values and school culture

We also appreciate the guidance we received from our medical experts and health and safety advisors

- > Jessica Evenson, Vice President of Compliance and Ethics at Saint Louis University
- > Michelle Miller-Thomas, Neuroradiologist at Washington University School of Medicine
- > Susan Searles Nielsen, PhD, Associate Professor of Neurology at Washington University
- > Stephanie Dents, Vice President of Manufacturing at Ronnoco Coffee



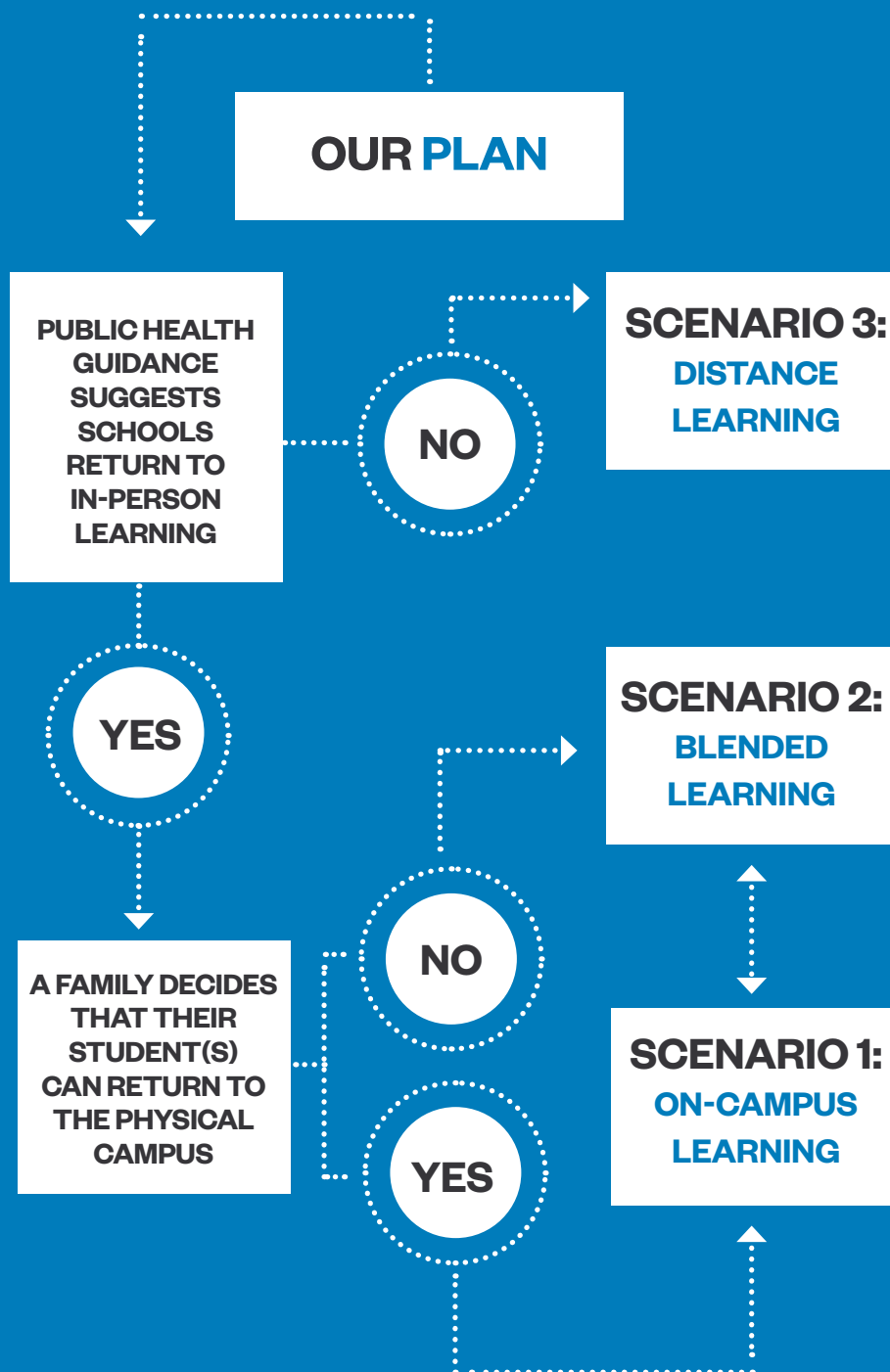
LEARNING SCENARIOS

We must remain flexible and, as a result, are planning for multiple scenarios for this fall:

Scenario 1: On-campus learning model - Students return for in-person education with adjustments.

Scenario 2: Blended learning model - Students who need to quarantine or are not comfortable returning to campus. See page 11 for more information.

Scenario 3: Distance learning model - All students shift to off-campus learning as needed.



ON-CAMPUS LEARNING (OCL)

ON-CAMPUS LEARNING CALENDAR

- > **Wednesday, August 19** - First day of school, half day with a noon dismissal (no lunch will be served)
 - > Orientation and community building day.
- > **Thursday, August 20** - Second day of school, full day for 1st-8th and half day for PreK and Kindergarten
 - > Continued community building activities. Students will receive their Chromebooks/tablets and class supplies.
- > **Friday, August 21** - Third day of school, full day for 1st-8th and half day for Preschool and Kindergarten
- > No-School Days have been rescheduled to provide four-day breaks (including a Saturday and Sunday) for deep cleaning and to allow for student cohort rotation (see cohort section on page 10 for more information).
 - > First break will occur **Saturday, October 3 to Tuesday, October 6**
 - > Second break will occur over fall break **Monday, November 23 to Friday, November 27**.

REOPENING PARTNERSHIP

In the face of COVID-19, there is unfortunately no approach that will guarantee safety at all times. Reopening school means there will be some level of inherent risk. The College School is taking a layered approach to our planning, employing a number of strategies and tactics to reduce risk to children, adults, and families. There is no single solution to the challenges that lie ahead, but we have taken steps to create the healthiest classrooms, buildings, procedures, and policies possible so that students can focus on learning in a caring environment. We also rely on you! No single person can greet this challenge alone. We depend on students, employees, and families to collaborate and cooperate with us, and we promise to communicate often with you as the situation evolves. We know you place great trust in The College School, and we place our trust in our community so that together we can navigate this pandemic.

COMMUNITY RESPONSIBILITIES

We all play an important role in preventing the spread of illness on campus. Below are some guidelines we urge your family to follow as we enter the school year.

- > Monitor your child(ren) for signs of illness. See page 9 for COVID-19 symptoms.
- > Keep your child at home if they show any signs of illness.
- > Keep your child home if they, others in your household, or someone close to your child are exposed to or test positive for COVID-19; contact the school immediately.
- > Pick up your child promptly if they show symptoms of illness and need to go home.
- > Follow federal, state, and local orders regarding social distancing and other measures to prevent the spread of COVID-19.
- > Provide your child with a face covering on a daily basis.
- > Practice and reinforce healthy behaviors at home.
- > Keep your medical information current with the school. Families will be completing several back-to-school forms before the first day of school.

HEALTH AND SAFETY - OCL

At school, students and employees can reduce the spread of COVID-19 by maintaining healthy behaviors, including regular handwashing, the use of face coverings, good coughing etiquette, social distancing, reduced mixing between groups, and limited sharing of supplies or materials. Staying home when exhibiting any signs of illness is particularly important, and we ask that all families adhere to this request. The College School will work hard to ensure children remain connected to their classrooms, and teachers will make reasonable adjustments to support students' continued learning. These layered tactics will mitigate the overall risk to the community.

The novel coronavirus and [COVID-19 transmit](#) via airborne droplets, close contact, and on shared surfaces. In response to this, the policies for students and staff will reflect these and emerging facts and will be modified as new facts or best responsible practices are identified.

TRAINING

- > Faculty and Staff will be provided training sessions during the week of August 10 including signs and symptoms of COVID-19, campus procedures, and response plans.
- > Families and students should review page 12 to learn best practices and find links to helpful videos. Families are encouraged to start practicing good hygiene and mask wearing before the first day of school.
- > Families, faculty, and staff are expected to model and follow all school expectations and policies.
- > Onsite signage will be displayed around the school to remind students, faculty, and staff about proper procedures and best practices.

SCREENING

- > Families will need to complete a daily screening questionnaire prior to bringing their student to school. Based on the answers to the questionnaire, the family will either bring the student to school or contact the school nurse to review this questionnaire and get further instruction. Faculty and staff will be required to complete the same screening questionnaire and assessment before entering the school.
- > All students, faculty, staff, and visitors will have their temperature checked by a staff member before entering the school.
- > All students, faculty, staff, and visitors may be subject to temperature checks, reporting of symptoms, and other precautions throughout the school day.

MASKS

- > Adults will wear masks when in the building with a few exceptions such as when they are eating or in an enclosed office with the door closed.
- > All students are required to bring a mask to school.
 - > Fourth Grade - Eighth Grade will wear masks when in the building.
 - > Early Childhood - Third Grade students will wear masks in designated areas (travelling in hallways, going to bathrooms, etc.) and in classrooms as determined by the teachers. Teachers will help students understand that the purpose is to keep their teachers and friends safe and help students build up their stamina by giving them mask breaks.
 - > TCS will provide two (2) masks to each student. It is recommended that each person has more than one mask available to promote better hygiene.

HEALTH AND SAFETY - OCL

SOCIAL DISTANCING AND HAND SANITIZING

- > Social distancing requirements will be located throughout the building including floor stickers showing six-foot spacing at each building entrance, all assigned bathrooms, and at central locations on each floor of the building.
- > Hand sanitizing stations will be available throughout the school, and all individuals will be required to use hand sanitizer upon entering the building.
- > Personal work spaces in classrooms will be socially distanced as much as space allows.
- > Plexiglass barriers will be at every workspace for Kindergarten - Eighth Grade.
- > Water fountains will not be in use, except for the bottle filling function. All students will be required to have a water bottle at school.
- > Grades will be assigned to a restroom to reduce cross contamination.
 - > Only one person at a time will be allowed in the restroom.
 - > Restroom breaks will be scheduled for each cohort.
 - > Restrooms will be cleaned and disinfected between assigned restroom times.

VENTILATION

Ventilation is a key measure that ensures a safer environment and can effectively dilute the concentration of Coronavirus in enclosed spaces. TCS will take precautions to increase ventilation in classrooms, on buses, and throughout the building.

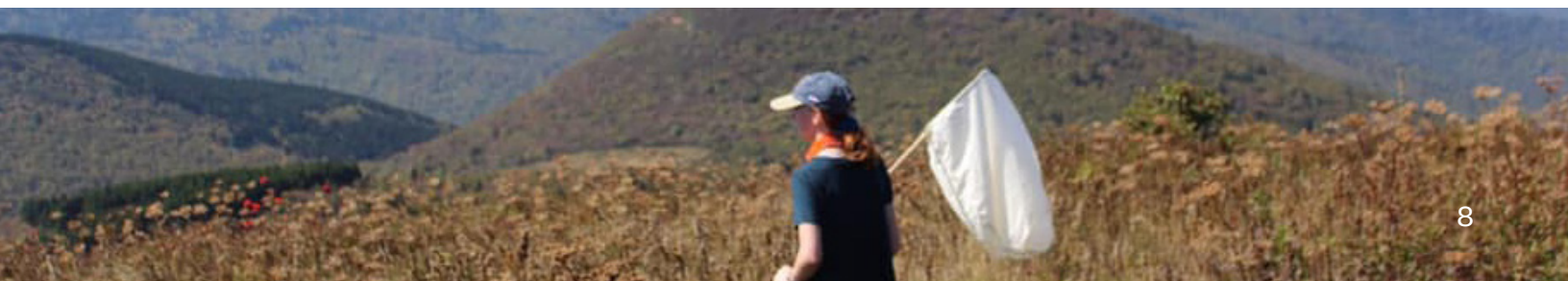
- > Windows will be opened in all classrooms when possible.
- > Window units will be installed in classrooms to provide better ventilation and air flow for each classroom and to decrease recirculation from the HVAC system when possible.
- > When buses are in use, windows will be down when possible.
- > Grades will have the option to work outside in designated areas.
- > Field trips will take place outdoors to minimize exposure in enclosed spaces (review the field trip section on page 11 for more information on trips off campus.)

SCHOOL CLEANING

- > All areas used during the school day will be cleaned and disinfected each day.
- > Classrooms will be cleaned and disinfected every school day between 3:00 PM-8:00 AM and as often as possible when the class leaves the room during the school day.
- > Buses will be cleaned and disinfected after each trip.
- > High touch surfaces, including door knobs, push bars, light switches, faucet handles, and others, will be cleaned and disinfected several times throughout the school day.
- > Playground equipment will be cleaned and disinfected daily.

VISITORS AND VOLUNTEERS

No non-essential visitors will be allowed into the building. All essential visitors will take the screening questionnaire and have their temperature taken prior to entering the building. Visitors will wear a mask at all times while in the building and will be accompanied by a faculty or staff member. A record of all visitors will be maintained.



HEALTH AND SAFETY - OCL

COVID-19 SICK POLICY

Consistent with our TCS sick policy as well as CDC Guidelines, students, faculty and/ or staff will be sent home if they exhibit a fever, vomiting, diarrhea or two or more of the following symptoms of COVID-19: chills, cough, shortness of breath, repeated shaking with chills, muscle pain, fatigue, headache, congestion or runny nose, sore throat, nausea, or new loss of taste or smell.

- > If a student, faculty, or staff member has been advised by a medical professional to take a COVID-19 test or shows symptoms related to COVID-19 and request a test, they may not return to school until after 10 days of quarantine with a note from their doctor releasing them back to school or work OR if the COVID-19 test comes back as negative.
 - > After contact tracing is completed, other students, faculty, and staff member may be asked to quarantine. If students are asked to quarantine they will have the option to engage in distance learning.
- > If a student, faculty, or staff member tests positive for COVID-19 or has been advised by medical professionals to quarantine they may return to school after 10 days of quarantine and/or they must provide a note from their doctor releasing them back to school or work.
- > For sickness not COVID-19 related, students, faculty, and staff members must follow the school's general sick policy. If a student, faculty, or staff member has a fever of 100 or higher, vomiting, and/or diarrhea they may not return to school until 24 hours after the fever has ceased with no fever reducing medicine.
- > If a parent is called to pick up a sick child, they are expected to pick them up within 30 minutes after confirmation with a school staff member.

REPORTING

If a student, faculty, staff or member of their household tests positive for COVID-19, they must inform the school. Information will be treated as confidential as is possible under exigent circumstances. School leaders will coordinate and cooperate with local health officials.

- > An email notification will go out school-wide if any student, faculty, or staff have tested positive for COVID-19. Notification will indicate what steps will be taken by the school. Name, grade, and other personal information will not be included in the notification.

ISOLATION POLICY AND PROTOCOL

If a student exhibits symptoms of COVID-19, they will immediately leave their classroom and go to the designated isolation area in the building where they will be supervised. If faculty or staff members exhibit symptoms of COVID-19, they will immediately leave the building.

CAMPUS CLOSURE

The College School is required to follow all mandates by St. Louis County including closing campus for contact tracing or broader school and community closures. In the event of closures, the school will implement remote work and distance learning where feasible.

PRESCHOOL PROGRAM NOTE

Because of The College School's designation as a licensed exempt child care facility by the State of Missouri and the Department of Elementary and Secondary Education, our youngest students fall into a unique category. There is a possible scenario next year that if schools are closed but the County of St. Louis allows child care centers to operate, there is a chance that TCS will choose to remain open and provide care for our preschool students, thus eliminating the need for remote learning for those grade levels. We will keep our preschool families updated on this possibility. Unfortunately, because child care facilities are intended only for children up to age 5 and younger than Kindergarten, only preschool students are eligible if this scenario comes to pass.

STUDENT SCHEDULE AND ACTIVITIES - OCL

Every student will receive information about their schedule before the first day of school. Families will be notified of their student's drop-off/pick-up times by August 1.

COHORT ROTATION

To limit exposure for students and faculty, each grade will be divided into smaller groups with designated learning areas. These groups or cohorts will remain together through the day to minimize crossover among children and adults within the school. Every student will be assigned a cohort for a six week rotation. After six weeks, students may be reassigned to a new cohort structure within their grade. A four-day break in between rotations will occur for deep cleaning.

DROPPING OFF AND PICKING UP OF STUDENTS

Due to the potential spread of novel coronavirus and COVID-19, regular school policy that allows families to enter the building for pick up and drop off throughout the school day, homework, after school items will be limited or prohibited.

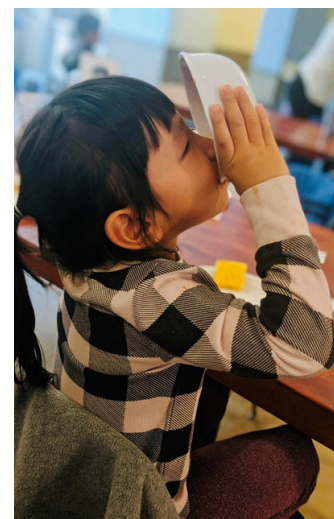
- > Cohorts will be assigned to one of four drop-off locations, and students will be dropped off at assigned, staggered 15-minute intervals starting at 8:00 AM.
- > Cohorts will be assigned to one of four pick-up locations, and students will be picked up at assigned, staggered 15-minute intervals starting at 3:00 PM.
- > All siblings will be dropped off/picked up at the same time and location as the first student being dropped off and picked up.
- > Parents and/or guardians must drop off and pick up students outside of the school buildings. Faculty and staff will be available to help students enter and exit.
- > If a parent has to pick up a child early, the parent must call the school, and the child will be brought to them at the designated door.
- > In cases where parents and/or guardians must enter the building for a medical emergency, required meeting with the Head of School, Division Heads, or other reason deemed appropriate, parents and/or guardians must utilize marked entrances and exits, limit time in the building, and be subject to a temperature check
- > Homework and left items will not be accepted during the school day.

SPECIALIST CLASSES

In order to reduce traffic in hallways and the resulting added exposure to students, faculty, and staff, Specialist teachers will travel to the cohort classrooms and teach their lessons in the classroom or at a designated cohort area. Each grade will see three specialists for six weeks and then rotate to the other three specialists. This rotation will correspond with the cohort rotation.

LUNCH

- > Lunch will be provided by the TOS kitchen staff every full school day. Lunch will not be provided on half days.
- > Lunches will be individually packaged and delivered to classrooms.
- > The lunch menu will be posted one month in advance. Families will make their selections at least one week in advance, choosing between an entree or a sandwich for each day of the week. There will also be an option for milk.
- > Students' allergies will be considered and accounted for in the making of the lunches.
- > Snacks may be sent to school with students, but may not, under any circumstances, be shared with other students.



STUDENT SCHEDULE AND ACTIVITIES - OCL

BEFORE AND AFTER SCHOOL CARE

As we plan for a possible re-opening of our school, we are determining what options we may offer for Before and After School Programs (BSP/ASP), specifically for the fall semester (August-December). We are taking into consideration the health and safety of our community, as well as the possible changing work schedules and comfort levels of our families. Please know if these programs are offered, appropriate safety measures and protocols will be followed.

FIELD TRIPS

Field trips will be determined by the location, safety of students and adults, and guidelines set by TCS. Attendance on field trips is not mandatory. Families may choose not to send their student on a field trip and keep them home.

- > Field trip destinations will be outside venues and/or areas only.
- > Travel parameters for field trips
 - > Field trips that require transportation by bus will be limited to a shorter travel time from campus. (see ventilation and school cleaning for mitigations of cross contamination).
 - > Overnight trips will take place in the St. Louis region.
 - > Some field trips will be within walking or biking distance to limit time on the bus.
- > In some instances, parents and/or guardians may be asked to drop-off and pick-up their student at the location of a field trip to minimize the necessity of bus travel time.
- > When a bus is used for travel, the following protocols will be followed:
 - > The bus will be loaded back to front and unloaded front to back.
 - > Face masks will be worn at all times.
 - > Windows on the bus will be open when possible.
 - > One student will be sitting per seat, and further distancing will be implemented when possible.
 - > There will be assigned seating.
 - > The bus will be cleaned and sanitized between each use.

BLENDING LEARNING OPTION

Students who need to quarantine or are not comfortable returning to campus can access core curriculum and specialist classes taught through a blended learning model facilitated by a teacher.

Families choosing the blended learning option can expect a mix of live instruction as well as independent activities and assessments to complete. They will be engaged in learning projects and have opportunities to work in partnership with their peers on-campus.

HOW FAMILIES CAN HELP THIS SUMMER - OCL

PRACTICE, PRACTICE, PRACTICE

For several months, we have all been confined to our homes and our local communities. For some children, going back to school may be a significant change in environment and may require a change in behavior.

- > Show children what six feet looks like and practice keeping social distance in public. The College School will provide a face covering for every student, but you should secure a supply of face coverings that are comfortable for your child. Test out different types and practice wearing them for increased periods of time each day in an effort to normalize them. Let your child have a say in the style and pattern to make it a fun experience. Here is a [how-to article](#) about wearing masks. You can also check out [this video](#) and [this video](#).
- > Practice being out and about around other people, putting social distancing and face covering measures into practice. See [this article](#) from the CDC on social distancing. Here is a helpful [video](#) you might watch with your child.
- > Explain to your child what school might look like based on this reopening plan. Talk to them about how they are feeling about the return to school.

TEACHING GOOD HYGIENE AND STAYING HEALTHY

- > Encourage your child to wash hands frequently and thoroughly, counting out 20 seconds and remembering what it's like to avoid touching the face and eyes. View [this article](#) from the CDC on handwashing. For helpful videos on handwashing, visit [this link](#), [this link](#), and [this link](#).
- > Practice coughing into elbows, and consider taking your child's temperature on a regular basis, so that it doesn't seem strange or new.

KEEPING KIDS EMOTIONALLY SAFE

- > Watch and listen to your child and be attentive to any changes in their mood or behavior.
- > Ask questions and reassure them that the adults in their lives are here to care for them. See [this video](#) from PBS Kids about feelings and emotions.
- > Introduce a routine that is more like school the closer we get to school so that students have fewer adjustments to get used to.
- > Reach out to our Student Support Team if you have questions or concerns specific to your child and their adjustment back to school. For Learning Specialist Katie Malone (kmalone@thecollegeschool.org) or School Counselor Tiffany Khang (tkhang@thecollegeschool.org).

DISTANCE LEARNING (DL)

DESIGN AND INTENTION

The College School's Distance Learning program will be a robust **mission-aligned** experience for our students and families. Our goals for distance learning will be to mirror a typical in-person school week as closely as possible and to keep your child engaged so they can **learn and grow**, while also affording them with meaningful opportunities for **connection and community**.



Penny Allen, Lower Division Head

Our Lower Division team has a wealth of experience and creativity. We have learned more about the potential available with distance learning to build connections with children and families, to address individual needs, and to continue hands-on learning experiences using both digital tools, paper and pencil, and other creative materials. Just as when we are in the building, teachers will support students in finding their voice and expressing their ideas.



Lori Knoblauch, Upper Division Head

I am really excited about the personalized nature of our distance learning program. Daily morning meetings with small groups of classmates to check in, support one another, and set goals for the day will keep our TCS students connected and promote community building. A combination of structured, live instruction, and student driven hands-on projects allow for our learners to explore their passions with the individualized support and guidance of their teachers. The weekly one-on-one check in with students and families will strengthen the connection between school and home while providing opportunities for frequent and timely feedback.

OVERVIEW - DL

DISTANCE LEARNING CALENDAR

> Wednesday, August 19 - First day of school

- > Meet and greets with families and teachers (distanced or virtual). Meetings will last 20 minutes.
- > Students will pick-up their Chromebooks/tablets and class supplies. A faculty or staff member will deliver items to cars.

> Thursday, August 20 - Second day of school

- > Meet and greets with families and teachers (distanced or virtual). Meetings will last 20 minutes.
- > Students will pick-up their Chromebooks/tablets and class supplies. A faculty or staff member will deliver items to cars.

> Friday, August 21 - Third day of school, full day

- > Students will connect virtually with other students in their class for community building activities. They will also receive orientation to the technology and software being used in class.

COMMUNICATION AND CONNECTION

We have designed opportunities for students and families to connect with their teacher both one-on-one and in a group setting. Our distance learning will provide students with direct individualized ways to build a relationship with their teacher, connect with other students, and learn through student driven, project-based learning.

- > At the start of the school year, teachers will connect with students and families individually to meet each other and share goals.
- > On August 21, students will connect virtually with other students in their class for community building activities.
- > One-on-one weekly meetings between teachers and student/families.
- > Daily LIVE morning meetings with teacher and students.
- > Frequent, individualized feedback, either written, recorded, or in person to help guide student learning
- > Specialist teachers will meet students twice a week.
- > Teachers will schedule office hours to provide time for student questions and support.

HOW CAN FAMILIES HELP?

- > Help your student prepare for the next school day by reviewing their schedule and activities the night before.
- > Just like getting to school on time, help your student be on time for morning meetings.
- > When your student has a question, encourage them to “visit” the teacher during their office hours.
- > Reach out directly to teachers if your student is struggling in a subject or with a project.
- > Contact us if you notice your student needs additional social and emotional support.



OVERVIEW - DL

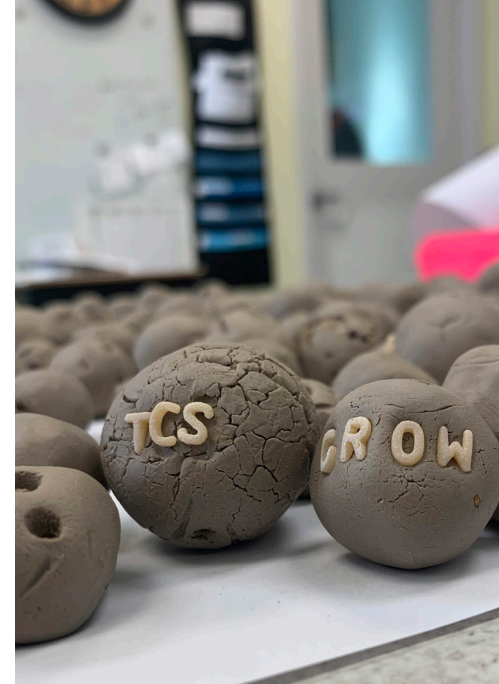
TECHNOLOGY

- > Students will be provided with a tablet (Preschool through Second Grade) or a Chromebook (Third Grade through Eighth Grade) to facilitate distance learning.
- > Clear directions will be provided to families and students about navigating the technology for communication, tracking assignments, and submitting student work.
- > All classes will be using the same four applications school-wide:
 - > Home base for all students and teachers: Google Classroom (with Seesaw linked for Preschool through Third Grade)
 - > Content Organization: Google Drive
 - > Synchronous learning sessions, daily morning meetings, group project work: Google Meet
 - > Asynchronous instructional videos and student work submission: Screencastify (and Seesaw for the younger student to submit work)
- > Students are expected to be respectful and courteous while online.
- > All students are expected to have their cameras on during synchronous learning sessions, while participating in group work, during the morning meeting, and while taking assessments at the teacher's request.



ADDITIONAL DELIVERABLES FOR DISTANCE LEARNING

- > Assignments will include on-screen and off-screen tasks that help connect to previous learning and the current curriculum.
- > A schedule will be provided to students and families in advance outlining the expectations for the week.
- > Project supplies will be provided by the school.
- > Social emotional learning will be incorporated daily.
- > Small group outdoor activities will be incorporated as guidelines allow.
- > Partnering with individuals and organizations beyond TCS will provide additional ways for students to engage in authentic learning experiences.



OVERVIEW - DL



Uchenna Ogu, Kindergarten Teacher

Teachers have spent our summer months researching, exploring and developing innovative remote learning opportunities that strive to keep the heart and magic of the TCS Early Childhood experience. We want to continue to inspire passionate, thriving, and joyful learners. Just as we would in the brick and mortar classroom, we will empower children to partner with teachers as well as each other, in order to create a thriving learning community. Listening closely to our students' and their contributions will determine how our curriculum unfolds.

Will Langton, Third Grade Teacher

Distance Learning provides ample opportunities to evolve and extend our experiential, rigorous program.

Socioemotionally, students still find themselves immersed in a predictable schedule, complete with whole group, small group, and one-on-one meetings with teachers and peers. And, as with in-class learning, students' hard work is noticed and celebrated by teachers and peers consistently. Collectively, students will be met where they are and will continue to be supported every day as grow into their diverse, complex, and wonderful selves.

Academically, students will complete coursework that is experientially-focused, rigorous, and developmentally appropriate. Student engagement is prioritized through interest-based, small group, and individual activities.



Sarah Hassing, Atelierista

While distance learning, Specialist teachers utilize multiple digital platforms in order to create authentic, child-centered learning experiences. Videos, Google Meet sessions, and communications through Seesaw and Google Classroom provide provocative ideas and spaces for exploring the visual and performing arts. Specifically, through our distance learning studio time, students' creativity and imaginations will be cultivated through painting, drawing, and the use of natural and recycled materials.

OVERVIEW - DL



Mindy Bhuyan, Fourth Grade Teacher

Distance learning will be full of rich and meaningful projects. Students will have a structured schedule for their days of learning. Their days will be set up with a mix of whole class meetings, small group and individual instruction times. They will be given projects connected to their theme studies that allow for creativity and will meet the needs of differentiated learners. Teachers will be available for guidance and instruction along the way.

Coursework will be broken into clearly defined expectations for students and parents. Accommodations will be considered when planning the days and we will strive to meet the needs of each child's academic and social development.

John Colbert, Middle School Teacher

Middle School teachers, as we always have, will focus on genuine relationships with our students as we collaborate to foster their social, emotional, and physical well-being. We will work to build a sense of community while engaging students in authentic learning experiences that challenge and extend them as individuals and as a group.



ADVENTURE AND OUTDOOR EDUCATION

Since 1963, TCS has specialized in learning outside the classroom. The College School's foundation in outdoor, adventure, and experiential education uniquely equips us with the expertise to facilitate safe, socially distanced learning experiences in a variety of outdoor settings, ranging from our schoolyard, to our LaBarque Campus, to a variety of local parks.

Many of the most lasting memories and lessons for students during their time at TCS arise from thematically-integrated, outdoor experiences that call upon them to exercise multiple strengths including understanding academic contexts, perseverance in physical challenges, and successful navigation of social interactions through the cultivation of empathy, compassion, cooperation, and leadership.

Though all social gatherings this school year will be subject to national and local health department requirements and recommendations, we know that increased ventilation of an outdoor setting is a safe alternative to enclosed spaces. TCS is uniquely positioned to ensure rich outdoor learning opportunities, no matter the mode of instruction recommended.

When able, our goal is to offer age appropriate, small group, outdoor activities, subject to health department guidelines (see page 4) as key components of TCS curriculum plans. Such experiences will

- > Take place at outdoor spaces that are well ventilated and allow social distancing measures.
- > Require students and families to follow the health and safety measures on pages 7-9.
- > Create opportunities for students to maintain social connections with peers and teachers.
- > Provide touchstone experiences that integrate with online curricula.
- > Make use of our Webster Groves neighborhood, LaBarque Campus, and parks in the surrounding St. Louis region.
- > Continue to comply with protocols informed by [NOLS Wilderness Medicine](#), consulting physician, Dr. Bob Wilmott, and our School Nurse Jen Martin.

Additionally, during in-person learning on our main campus

- > Cohorts will have designated outdoor areas to use as extensions to their classrooms.
- > Students will enjoy daily outdoor free play with their cohort group.

LABARQUE CAMPUS

Our LaBarque Campus in Pacific, Missouri, is wonderfully situated as a setting for outdoor activities for students of all ages, especially so in this challenging time. The 28-acre property allows our students the freedom to explore the outdoors with mitigated exposure and provides an abundance of opportunity for our teachers to build and deliver an exciting curriculum. Our LaBarque Campus stands out as a unique asset that will allow teachers to provide safe, engaging, outdoor learning experiences and continue to foster social emotional connections - both among peers and between students and teachers.



GLOSSARY OF TERMS

**ASYNCHRONOUS
LEARNING**

Students working at their own pace, not all at the same time

**SYNCHRONOUS
LEARNING**

Students and teachers working together at the same time

VIRTUAL CLASSROOM

A digital classroom learning environment that allows teachers and students to interact and is implemented through software such as Google Classroom and Seesaw

COHORT

A small number of learners working together over a period of time.



INVESTMENTS IN SAFETY, PROGRAM, AND COMMUNITY

As The College School navigates the coming year, we are committed to providing a healthy and safe environment, maintaining a rich learning experience, and supporting our community to remain at TCS through this challenging time. We have made a number of financial investments to achieve this goal.

HEALTHY CAMPUS



Increased sanitization of touchpoints and disinfecting of supplies around school



Face masks worn on campus by all adults and students at designated times



Frequent washing or sanitizing of hands



Designing personal work spaces to facilitate social distancing



Eliminating large group gatherings in indoor spaces



Completion of health questionnaire will be required before entering campus



Temperature screening will be required when students return to campus

ENHANCED PROGRAM



Professional development in online and blended learning for faculty



1:1 Chromebooks/ Tablets for 2020-2021

STRONG COMMUNITY



Establishment of the [Family Relief Program](#) to help families financially impacted by COVID-19

Flexibility for distance learning to support diverse family needs



SOCIAL EMOTIONAL WELLBEING

Social and Emotional Learning (SEL) is an integral part of teaching and learning at The College School. SEL is defined as the process through which children and adults understand and manage emotions, set and achieve positive goals, establish and maintain positive relationships, and make responsible decisions.

We know that SEL is foundational to the success of our school. It matters that our students, faculty, and staff, families and administration are being cared for and supported in this moment. Against the backdrop of the continuing global pandemic, our nation is also processing the mobilization against institutional racism that has deeply harmed Black and Brown America. All of us have been impacted in some way by these multiple, interconnected events. We know we will have much to process as a community when we come back together.

The impact of these challenges means that SEL will be a priority this year. Research is clear that strong SEL support is essential as the basis for our students' academic success and social emotional well-being. Our hope is to root our return in meeting the social emotional needs of all members of our community.



STUDENT WELLBEING

Student wellbeing will be a priority for our school during reopening and throughout the year. Faculty and staff will model the qualities of warmth, empathy, optimism, and respect for interactions amongst our community.

- > Students will have dedicated time each day to work on Social Emotional Learning.
- > The school will use the DESSA Aperture social emotional assessment tool for every student.
 - > The assessment tool will help educators and families identify and maximize their student/child's strengths.
 - > The assessment tool will help determine which students may need additional support.

SUPPORTING OUR FACULTY & STAFF

In addition to supporting our students and families, we are prioritizing the health and wellbeing of our faculty and staff, as well as providing professional development opportunities.

- > Faculty and staff will be offered dedicated time to discuss their experiences during the pandemic.
- > Faculty and staff will receive Social Emotional Learning (SEL) resources to access during the school year.

RACIAL LITERACY

Racial Literacy is a set of practices that teach children and adults how to identify and respond to racism and to develop strategies to combat oppressive systems.

- > We are committed to being a No Place for Hate school again this school year.
- > TCS will continue to incorporate racial literacy to our curriculum.
- > Faculty and Staff will be engaging in Anti-Bias Anti-Racism training.

WHAT WE WILL GAIN

As we plan for this coming year, it can be easy to focus on things we will lose or beloved experiences that will be modified due to COVID-19. The global pandemic has certainly altered our way of life, and it will change our way of doing school. That being said, it's important for us to step back from these feelings of loss to also consider what we will gain during this experience together.

- > Closer relationships between students and teachers in an immersive setting
- > A deeper, collective commitment to the mental and emotional health of children
- > A tighter-knit community that trusts deeply and relies heavily on each other's intentions, actions, and care
- > An innovative mindset among teachers who are thinking flexibly and creatively about how best to serve the needs of diverse students in a variety of settings
- > An ability, both individually and collectively, to meet difficult challenges and to adapt to changing conditions
- > A collective openness to change and a renewed sense of purpose



COMMITTEE ON REOPENING SCHOOL

We are grateful to the members of the CRS and its subcommittees for their time, creativity, and flexibility as we continue to design the best experience possible for our students. Numerous other faculty and staff have participated in planning conversations and have helped generate the plans included here. We thank everyone for their important contributions.

The College School Committee on Reopening School

- > Head of School: Carl Pelofsky
- > Division Heads: Penny Allen, Lori Knoblauch
- > Chief Financial Officer and Director of Facilities: Andrew Gillentine
- > Director of Development & Communications: Brie Alley
- > Director of Admissions & Marketing: Jill Pampel
- > Learning Specialist: Katie Malone
- > Director of Equity & Inclusion and School Counselor: Tiffany Khang
- > Teacher and Specialist Representatives: Will Langton, Sarah Hassing
- > Administrative Assistant: Joyce Vest

CRS Subcommittees

> **Academics and Adventure:** Penny Allen and Lori Knoblauch, Chairs

Members: Uchenna Ogu, Mary Jo Wilmes, Heather Walka, Kevin Parentin, Jason Raznick, Suzie Schmidt, Darel Shelton

> **Social-Emotional Wellbeing:** Tiffany Khang and Katie Malone, Chairs

Members: Mindy Bhuyan, John Colbert, Emily Figley, Sarah Gravemann

> **Health, Safety, and Logistics:** Andrew Gillentine, Chair

Members: Julia Batz, Gina Brym, Jen Martin, Dan Masters, Joyce Vest, Monica Watson, Leah Zueger

> **COVID-19 Advisory:** Brie Alley and Jill Pampel, Chairs

Members: Carl Pelofsky, Andrew Gillentine, Penny Allen, Lori Knoblauch, Stephanie Dents (Trustee), Jessica Evenson (TCS Parent), Michelle Miller-Thomas (TCS Parent), Susan Nielsen (TCS Parent)



thecollegeschool.org